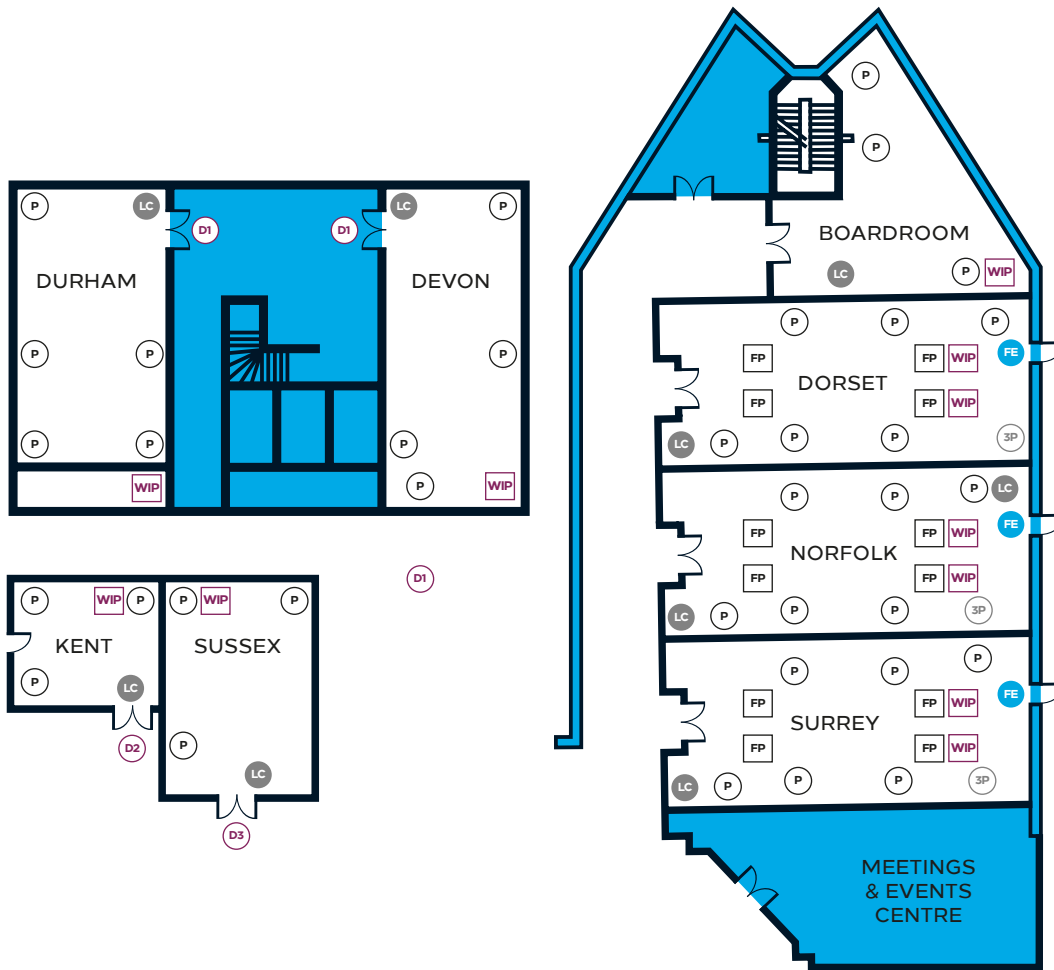


# Small meeting spaces

## Hilton Birmingham Metropole

FLOORPLAN



KEY

- WIP Wifi Point
- 3P Three Phase Power
- P Power Point
- FE Fire Exit
- LC Lighting Controls
- FP Floor Power Point
- Back of House
- D1 1.69m x 2.04m
- D2 1.54m x 2.03m
- D3 1.69m x 2.03m

### ABOUT THE SPACE

Located just a short walk from the National Exhibition Centre (NEC), Hilton Birmingham Metropole offers a choice of flexible meeting rooms. Designed to host from two to 50 delegates, these spaces are ideal for smaller meetings and can be adapted to suit your event, with each also licensed until 2.00am.

The hotel's Meeting's Simplified package is available for meetings of up to 35 guests, and features our all day food grazing concept in our Millers meeting hub. Millers offers a communal space for guests to network and rehydrate before returning to their next agenda point. With flexible timings and a variety of fresh light bites served throughout the day, the space allows for your meeting to flow and be as productive as possible.

Meeting rooms and technical information	Dorset/Norfolk/Surrey/Boardroom	Devon/Durham	Sussex/Kent
3-phase power	yes	no	no
32 Amp	yes (except Boardroom)	no	no
13 Amp	yes	yes	yes
Downlighters	yes	yes	yes
Fluorescent lights	yes	yes	yes
Lighting controls	yes	yes	yes
Dimmable lights	no	no	no
Natural daylight	yes	no	no
Disabled access/accessible	yes	no	yes
Vehicle access	no	no	no
Office space	no	no	no
Buffet points	25m x 2m per point	25m x 2m per point	25m x 2m per point
Buffet point base	1 per 75 people	no	1 per 75 people
Bar area	152m front/4.57m average size	152m front/4.57m average size	152m front/4.57m average size
Logo size for lit bar fronts	15m x 0.99m	15m x 0.99m	15m x 0.99m
Glass/formica table tops	1.19m/0.89m/1.04m height 0.66m x 0.66m/ 0.89m x 0.89m/ 0.74m x 0.74m top	1.19m/0.89m/1.04m height 0.66m x 0.66m/ 0.89m x 0.89m/ 0.74m x 0.74m top	1.19m/0.89m/1.04m height 0.66m x 0.66m/ 0.89m x 0.89m/ 0.74m x 0.74m top
TV aerial point	no	no	no
Weight loading	n/a	n/a	n/a
PA	yes (except Boardroom)	no	no
In-built LCD Projection	yes	no	no



Capacities	Boardroom	U-Shape	Theatre	Theatre back projection	Classroom	Classroom back projection	Cabaret	Cabaret back projection	Banquet	Dinner Dance	Reception	Buffet (informal)
Dorset	25	25	60	—	34	—	32	—	—	—	—	50
Norfolk	25	25	60	—	34	—	32	—	—	—	—	50
Surrey	25	25	60	—	34	—	32	—	—	—	—	50
Devon	20	20	50	—	30	—	30	—	—	—	—	30
Durham	20	20	50	—	30	—	30	—	—	—	—	30
Sussex	12	12	15	—	12	—	16	—	—	—	—	20
Kent	10	—	10	—	10	—	10	—	—	—	—	15

Dimensions	Dorset	Norfolk	Surrey	Sussex	Kent	Boardroom	Devon	Durham
Dimensions L x W (m)	117 x 6	117 x 6	117 x 6	65 x 55	55 x 47	8.7 x 8.9	10.5 x 5.5	9.8 x 5.5
Height Max (m)	26	26	26	249	24	26	25	25
Height Min (m)	26	26	26	249	21	26	25	25
Area (m2)	702	702	702	36	26	774	57	53

**HILTON BIRMINGHAM METROPOLE**  
National Exhibition Centre  
Birmingham | B40 1PP | United Kingdom

W: [birminghammet.hilton.com](http://birminghammet.hilton.com)  
T: +44 (0)121 780 4242  
E: [events.birminghammet@hilton.com](mailto:events.birminghammet@hilton.com)

